

S.Y. B.PHARM SEMESTER IV
PHARMACOGNOSY & PHYTOCHEMISTRY-I (CBCS R-2019)
QUESTION BANK
MULTIPLE CHOICE QUESTIONS

Choose appropriate option for following multiple choice based questions.

1. -----are agents that can cause a birth defect by permanently altering the structure and functions of organs exposed to them
 - a **Teratogens**
 - b Allergens
 - c Hallucinogens
 - d Enzymes

2. Opium poppy is an example of
 - a Dried extract
 - b **Dried latex**
 - c Gummy exudate
 - d Dried juice

3. The method of collection of gum from the plant
 - a felling
 - b cutting
 - c **tapping**
 - d digging

4. Identification of drugs based on its taste and smell is
 - a **Organoleptic evaluation**
 - b Physical evaluation
 - c Chemical Evaluation
 - d Microscopical evaluation

5. Swelling index of a crude drug is
 - a Volume occupied by the solvent after the swelling of 10gms of herbal material under specific conditions.
 - b **Volume in ml taken up by the swelling of 1gm of herbal material under specific conditions.**
 - c Volume in ml taken up by the swelling of 10gms of herbal material under specific conditions.
 - d Volume occupied by the solvent after the swelling of 1gm of herbal material under specific conditions.

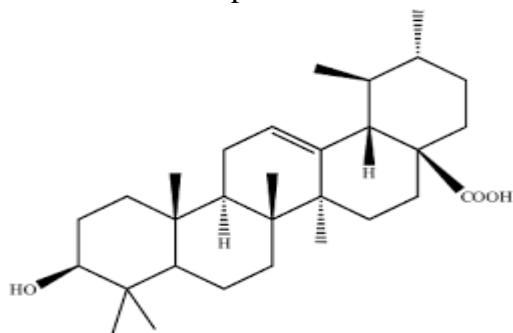
6. Organized drugs are different from unorganized drugs in having
a Cellular structure
b Calcium oxalate crystals
c Medicinal properties
d Natural origin
7. Which of the following technique is capable of inducing genetic manipulation resulting in production of pest resistant species
a biological control
b agricultural control
c mechanical control
d chemical control
8. Temperature and light are _____ factors affecting cultivation
a Exogenous
b Endogenous
c Indigenous
d Internal
9. The technique used to promote heterozygous strain is called
a Polyploidy
b Mutation
c Hybridisation
d Breeding
10. _____ is an unorganised , undifferentiated mass of cells
a Callus
b Anther
c Suspension
d Protoplast
11. *Agrobacterium tumifaciens* is used to create
a Hybrid plants
b Transgenic plants
c Polyploidy
d Mutant plants
12. Following statements are true for unorganised drugs; except
a Unorganised drugs have cellular structure.

- b Unorganised drugs do not have morphological structure.
 - c Unorganised drugs are obtained from natural sources.
 - d Unorganised drugs can be solid, semisolid or liquid.
13. A change of the DNA sequence within a gene or a chromosome of an organism resulting in the creation of a new character or trait not found in the parental type
- a Chemodemes
 - b Hybridization
 - c Polyploidy
 - d Mutation**
14. The drugs which alleviate anxiety and impart a state of euphoria are called
- a Hallucinogens**
 - b Allergens
 - c Teratogens
 - d Inhalants
15. The content of hydroxy methyl furfural is used to detect the adulteration in
- a Honey**
 - b Gelatin
 - c Acacia
 - d Wool fat
16. This proteolytic enzyme helps in breaking down of clots
- a Pepsin
 - b Papain
 - c Streptokinase**
 - d Serratiopeptidase
17. Hydnocarpus oil is also called as
- a Sunflower oil
 - b Chaulmogra oil**
 - c Castor oil
 - d Arachis oil
18. Acetic anhydride and sulphuric acid are reagent used in
- a Shinoda`s test
 - b Borntager`s test
 - c Liebermann Burchard test**
 - d Murexide test

19. _____ are organic nitrogen containing heterocyclic drugs having potent pharmacological property
- a Catechol tannins
 - b Indole alkaloids**
 - c Gallotannins
 - d Amino acids

20. One of the following is a property of resin
- a Resins are soluble in alcohol but insoluble in water.**
 - b Resins are basic in nature.
 - c Resins are obtained from amino acids.
 - d Resins are primary metabolites of plant.

21. This class of compounds contains the following ring. Identify.



- a steroid class
 - b triterpenoid class**
 - c anthraquinone class
 - d isothiocyanate class
22. Artificial invert sugar, an adulterant for honey is detected by ---
- a Selivonoff's test
 - b Fiehe's test**
 - c Ninhydrine test
 - d Fehling test
23. Position of Plant in taxonomy and chemical nature of drugs is included in which of the following system of classification
- a Taxonomical Classification
 - b Chemotaxonomical Classification**
 - c Chemical classification
 - d Serotaxonomical classification

24. Total Ash value in case of crude drug signifies
- a Organic content of the drug
 - b Cellular content of the drug
 - c Inorganic content of the drug**
 - d Phytoconstituents of the drug
25. Palisade ratio is
- a Total number of palisade cells beneath each epidermal cell
 - b Total number of Palisade cells beneath mesophyll
 - c Average number of Palisade cells beneath each epidermal cell**
 - d Average number of Palisade cells beneath four continuous epidermal cells
26. The natural plant growth regulator which promote cell division, cell elongation and useful in root formation, phototropism, geotropism and apical dominance
- a Cytokinins
 - b Abscisic acid
 - c Auxins**
 - d Gibberellins
27. One of the following describes the shape of bark
- a Quill**
 - b Squill
 - c Smooth
 - d Short
28. All the following examples are correct with respect to drying except one. choose the same
- a Drying prevents atmospheric degradation.
 - b Drying prevents from microbial attack.
 - c Drying prevents the hydrolysis of phytoconstituents.
 - d Drying causes the loss of inorganic elements.**
29. Dibbling is a
- a method of collection of bark
 - b type of vegetative propagation
 - c plant tissue culture technique
 - d method of sowing the seeds**
30. Following are the methods of in -situ conservation except
- a National Park

b Botanical Garden

c Statuary

d Biosphere reserve

31. The branched chain constituent of starch is:

a Cellulose

b Bassorin

c Amylose

d Amylopectin

32. Raphides are

a Bundles of acicular crystals

b Clusters of prismatic crystals

c Single acicular crystal

d Single prismatic crystal

33. Following are the macronutrient; except

a Nitrogen

b Sulphur

c Copper

d Potassium

34. The unorganized mass of cells which proliferates from the cells of an explant is termed as

a Callus culture

b Protoplast culture

c Suspension culture

d Culture

35. The system of medicine which put forth the Laws of Similars which says that like cures like (Similae similibus curentur)

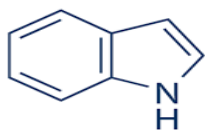
a Unani

b Homeopathy

c Ayurveda

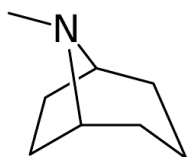
d Siddha

36. Identify the class of compound from the given basic nucleus



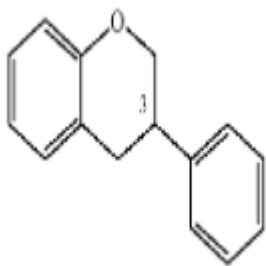
- a **Indole Alkaloids**
- b Anthraquinone Glycosides
- c Quinoline Alkaloids
- d Cardiac Glycosides

37. Identify the type of alkaloid from the given basic nucleus



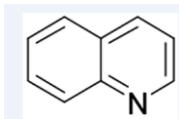
- a Quinoline
- b **Tropane**
- c Isoquinoline
- d Aminoalkaloid

38. Identify the class of compound from the given basic nucleus



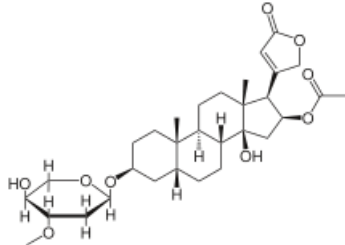
- a **Isoflavonoids**
- b Neo Flavonoids
- c Flavonoids
- d Flavan-3-ol

39. Following nucleus is



- a Catechol
- b Quinoline**
- c Anthraquinone
- d Indole

40. Following nucleus is



- a Cardenolide**
 - b Bufadienolide
 - c Phenylpropanoid
 - d Triterpenoid
41. C-Anthraquinone glycosides are confirmed by which of the following tests
- a Borntrager's test
 - b Modified Borntrager's test**
 - c Keller Killiani test
 - d Shinoda test
42. The reagent used in borntrager`s test
- a Magnesium turnings and HCl
 - b Ammonia**
 - c Acetic anhydride and sulphuric acid
 - d Magnesium turnings and acetic acid
43. Hemp is an example of fibre belonging to the class
- a Regenerated fibre
 - b Mineral fibre
 - c Carbohydrate fibre**
 - d Protein fibre
44. Paraffin wax mixed with bees wax is sold in the market. This is an example of
- a Substitution
 - b Kneading
 - c Adulteration**
 - d Admixture

45. Cytokinins are derivatives of
- a Proteins
 - b Adenine**
 - c Glycosides
 - d Indole
46. Which of the following constituent in agar is responsible for gel strength
- a Agaropectin
 - b Agarose**
 - c Agarin
 - d Amylose
47. The proteolytic enzyme derived from the bacteria present in the gut of silk worm
- a Urokinase
 - b Streptokinase
 - c Serratiopeptidase**
 - d Pepsin
48. Acacia and tragacanth are examples of natural gums classified in specific group
- a Seed gums
 - b Marine gums
 - c Exudate gums**
 - d Microbial Gums
49. This enzyme is produced by human kidneys and is used to dissolve fibrins and clots
- a Urokinase**
 - b Streptokinase
 - c Serratiopeptidase
 - d Pepsin
50. Gelatin is the example of source of drug of natural origin which is obtained from the following
- a Vegetable source
 - b Animal source**
 - c Mineral source
 - d Marine Source
51. _____classification includes classification of organised and unorganised drugs.

- a **Morphological**
 - b Pharmacological
 - c Chemical
 - d Chemo-taxonomical
52. Lycopodium spore method can be performed in the
- a leaf drugs only
 - b **powdered drugs with well-defined particles which may be counted**
 - c any powdered drugs
 - d unorganised drugs only
53. _____ is an organoleptic evaluation parameter.
- a **Odour**
 - b Melting point
 - c Moisture content
 - d Foaming index
54. Which of the following leaf constant can be determined in powdered drugs
- a Vein islet number
 - b Stomatal number
 - c Stomatal index
 - d **Palisade ratio**
55. The drugs which are sensitive to higher temperature are dried by
- a tray drying
 - b sun drying
 - c spray drying
 - d **vacuum drying**
56. The following are the properties of volatile oil except
- a They have monoterpene class of compounds
 - b They are soluble in organic solvents
 - c **They give Shinoda test positive**
 - d They give vanillin -sulphuric test
57. Stems of sugarcane can be elongated by this hormone
- a Indole acetic acid
 - b Ethylene
 - c Abscic acid
 - d **Gibberellins**

58. One of the following will respond to Phloroglucinol+HCl test
- a **Jute**
 - b Cotton
 - c Dextrin
 - d Gelatin
59. Which of the following will change with the age of leaf
- a Vein islet number
 - b **Stomatal number**
 - c Stomatal index
 - d Vein termination number
60. Following are the exogenous factors; except
- a **Hybridization**
 - b Altitude
 - c Temperature
 - d Soil
61. Change in DNA sequence is called as
- a Grafting
 - b Polyploidy
 - c Formation of callus
 - d **Mutation**
62. _____ is a type of culture in which single cell or small aggregates of cell multiply while suspended in agitated liquid medium.
- a **Suspension culture**
 - b Embryo culture
 - c Somatic Embryogenesis culture
 - d Pollen culture
63. Following are the types of plant tissue culture; except
- a **Garbling**
 - b Callus
 - c Suspension
 - d Protoplast
64. _____ are transgenic plants which trigger an immune response to provide immunity against particular infectious diseases.

- a Allergens
 - b Edible vaccines**
 - c Polyploids
 - d Mutants
65. One of the following is obtained from the aqueous extract of the bones of domestic animals
- a Gelatin**
 - b Chitin
 - c Dextrin
 - d Pepsin
66. _____ is the natural growth inhibiting substance present in plants.
- a Auxins
 - b Abscisic acid**
 - c Polyamines
 - d Ethylene
67. Pollens are _____ type of allergens.
- a inhalants**
 - b contact
 - c ingestants
 - d injectants
68. Colchicine is an chemical agent which is commonly used for inducing.
- a hybridization
 - b polyploidy**
 - c mutation
 - d chemical races
69. The alcohol solubility of castor oil is due to the _____ constituent.
- a Ricinoleic acid**
 - b Myricyl palmitate
 - c Stearic acid
 - d Linoleic acid
70. _____ is obtained from *Ananas comosus*.
- a Papain
 - b Streptokinase
 - c Bromelain**

d Serratiopeptidase

71. _____oil is heated at 80 degree centigrade for removal of toxic principle.

- a Sunflower oil
- b Chaulmogra oil
- c Castor oil**
- d Arachis oil

72. Borntragers test is done for

- a Alkaloids
- b Volatile oils
- c Anthraquinones**
- d Flavonoids

73. Following statements are true for alkaloids except;

- a Alkaloids are polyphenolic compounds**
- b Alkaloids are basic in nature
- c Alkaloids are derived from amino acids
- d Alkaloids are secondary metabolites

74. Astringent action is shown by

- a Glycosides
- b Volatile oils
- c Steroids
- d Tannins**

75. Indian Pharmacopoeia has Drugs Of Natural origin arranged as per_____.

- a Alphabetical classification**
- b Morphological classification
- c Chemical classification
- d Taxonomical classification